

# ABOVE GROUND / MARINA STEEL DISPENSER CONTAINMENT B-8600 SERIES

EPOXY-COATED, GALVANIZED OR FIBERGLASS COATED STEEL

B-8600



Rugged stabilizer brackets for pressure or suction valves

Float amplification reservoir

Powder epoxy coated paint

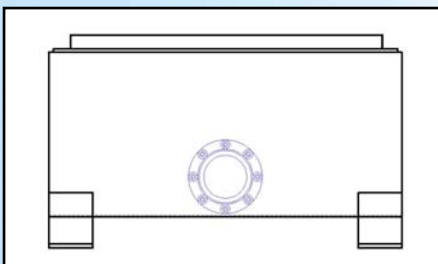
12-gauge steel

Product penetration fittings with secondary hose termination

- Mounts dispensers plumbed to above ground tanks.
- Compatible with mechanical and electronic shutdown devices.

## UPGRADING ?

When dispensers are upgraded, the B-8600 remains in place. Switch out only the interchangeable, inexpensive upper dispenser frame.



### B8600 Standard

Elevated with Bravo Float Trip & penetration extending from side.

#### - B8600-B Basic -

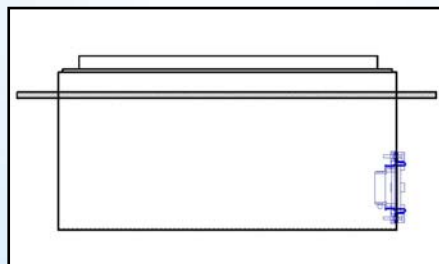
Ships with one bracket but no fittings or float cups.

#### - B8600 1 Product -

Ships with one bracket, one float cup and one 1.5", 2" or 3" Flexible fitting loose. Shear valves separate.

#### - B8600 2 Product -

Ships with two brackets, two float cups and two 1.5", 2" or 3" Flexible fittings loose. Shear valves separate.



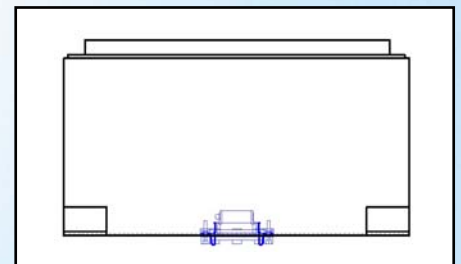
### B8600 Flush Mount

Typically inset into dock with side penetration. Flange height is customizable

Flush Mount version has same options/models as the Standard.

#### B8600 Series Options:

Single Poppet Shear Valve  
Double Poppet Shear Valve  
Factory-Installed Penetrations  
Galvanized coat  
Fiberglass coat  
And more!



### B8600-RETRO

Retrofit model B8600 with Bravo Float Trip

#### - B8600 Retrofit 1 Product -

Ships with one bracket, one single poppet shear valve, one float cup, one 1.5" nipple, one 3x1.5" reducer and one Electrical Fitting (EBS)

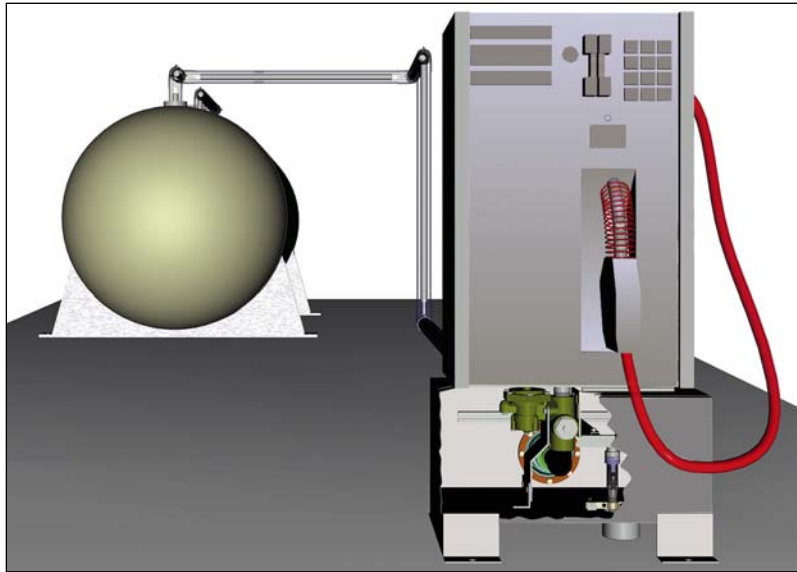
#### - B8600 Retrofit 2 Product -

Ships with two brackets, two single poppet shear valves, two float cups, two 1.5" nipples, two 3x1.5" reducers and two Electrical Fittings (EBS)

**An industry first! Designed for marina and above ground dispensers.**

# B-8600

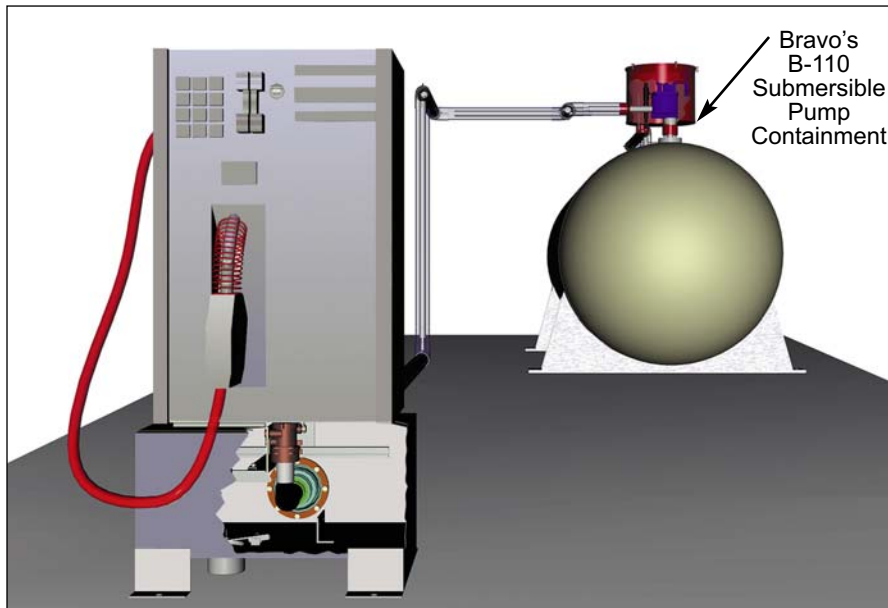
## Typical Suction System Installation



### OPTIONAL EQUIPMENT:

- EBS field installed electrical penetration with seal for 3/4" and 1" conduit
- FT float trip assembly for pressurized systems
- PS-8600 power shutdown device for suction systems (13 amp relay and explosion proof box)
- FC-8600 fiberglass coat
- B-27SET-3 field installed vapor penetration for 1-1/2" female NPT with 3" secondary adapter
- SV 1-1/2" single poppet product shear valve
- DV 1-1/2" double poppet product shear valve

## Typical Pressurized System Installation



### PRODUCT SPECIFICATIONS:

Model No.: B-8600-1P  
B-8600-2P

Material: UL listed powder epoxy-coated steel

Shipping Weight: 140 lbs.

Patent: Patent Pending

Depth: 17-1/2" or Custom

Length x Width:  
Large: 48"L x 25"W  
Medium: 36"L x 25"W  
Small: 29"L x 25"W

**S. Bravo Systems, Inc. - The Leader in Secondary Containment**

2929 Vail Ave. | Commerce, CA | 323-888-4133 | FAX: 323-888-4123 | [www.sbravo.com](http://www.sbravo.com)

